

Top Reasons to Use FlamePRO® Fire Retardant Treated Wood Products

- FlamePRO Fire Retardant pressure treated wood products, as described in the ICC Evaluation Services, Inc. ESR-4244, meet all U.S. major model building code requirements.
- UL Classified with an FR-S Rating for flame spread and smoke development values of 25 or less.
- FlamePRO Fire Retardant pressure treated wood products comply with AWPA UC-1 and UCFA use category systems, FlamePRO treatment process meets the AWPA T1 standard.
- UL GREENGUARD GOLD Certification - The FlamePRO formulation has undergone rigorous testing and met stringent standards for low volatile organic compound (VOC) emissions. Products certified to this criteria are suitable for use in schools, offices, and other sensitive environments.
- SCS INDOOR ADVANTAGE™ GOLD CERTIFIED - SCS Global Services has completed the evaluation of Koppers's FlamePRO Treated Lumber products. Koppers FlamePRO Fire Retardant Treated Wood products meet all the necessary requirements to be certified Indoor Advantage™ Gold.
- Cal Fire Certified.
- AIA Approved Continuing Education Provider.

- FlamePRO Fire Retardant pressure treated wood products are backed by a 50 Year Limited Warranty Program from Koppers Performance Chemicals Inc.*
- Hygroscopicity testing conducted by a third party independent laboratory has confirmed that compared to untreated wood, FlamePRO brand fire retardant treated wood does not pick up excessive moisture under ASTM D3201 test conditions.
- 1 Hour and 2 Hour Tested Interior Wall Assembly, and 2 Hour Tested Exterior Wall Assembly (ASTM E119). For details refer to ESR Report 4244.
- The majority of common lumber and plywood species used in building construction can be treated with FlamePRO.
- Low corrosion rates to code-approved metal fasteners and hardware.
- Optional orange color for building site recognition.
- BSD SpecLink: Master Specification Content for Architectures, Engineers, and Construction Markets.



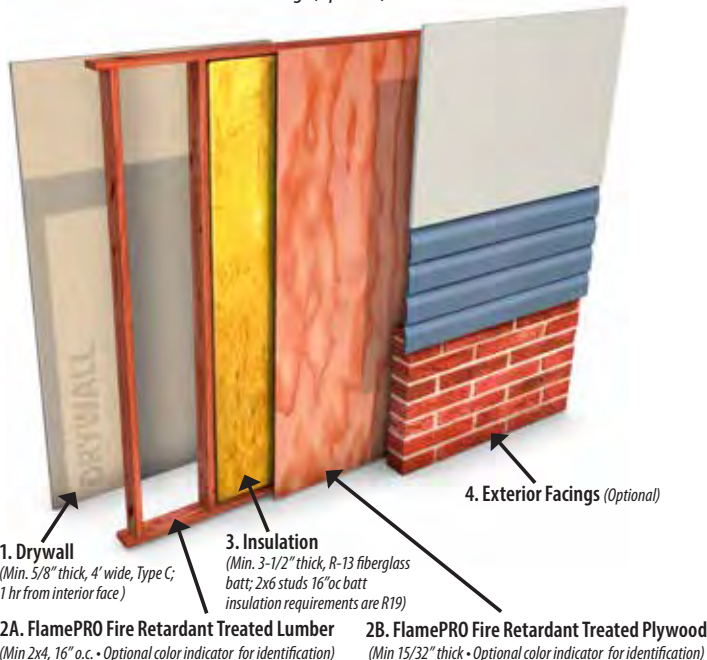
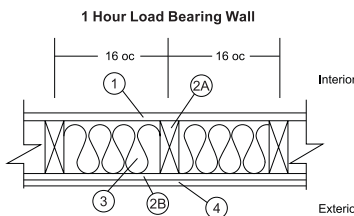
1 & 2 HOUR TESTED INTERIOR WALL ASSEMBLIES (ASTM-E119, ANSI/UL 263)

1 Hour Tested Interior Wall Assembly (60-02)

Max. Tested Load: 100% of Design Load

Fire Ratings: 1 hour, load bearing rated from one side (interior side only). For details refer to ESR Report 4244.

- 1. Drywall
- 2A. FlamePRO Lumber
- 2B. FlamePRO Plywood
- 3. Insulation
- 4. Exterior Facings (Optional)

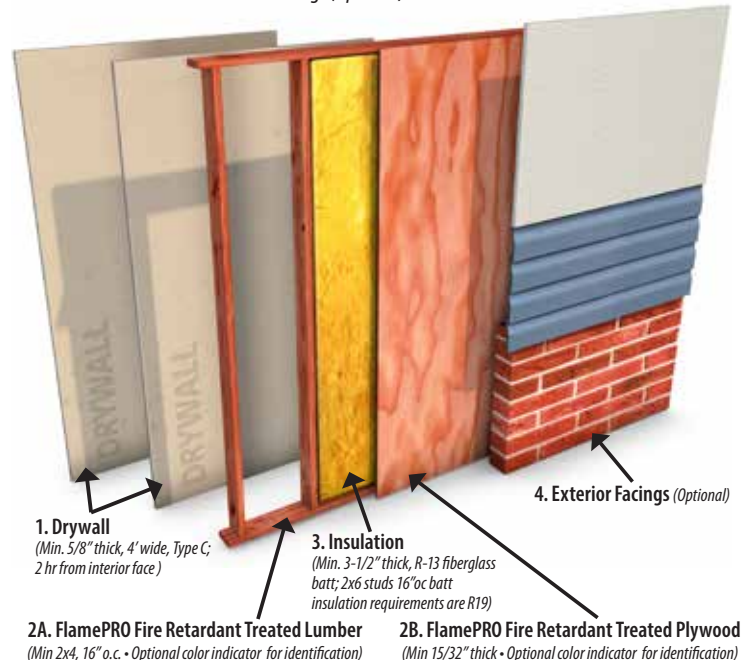
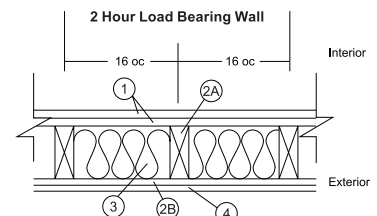


2 Hour Tested Interior Wall Assembly (120-01)

Max. Tested Load: 100% of Design Load

Fire Ratings: 2 hour, load bearing rated from one side (interior side only). For details refer to ESR Report 4244.

- 1. Drywall
- 2A. FlamePRO Lumber
- 2B. FlamePRO Plywood
- 3. Insulation
- 4. Exterior Facings (Optional)



* Available at Koppers Performance Chemicals Inc., Attn: Consumer Affairs, P.O. Drawer 0, Griffin, Georgia 30224-0249 or visit www.kopperspc.com

See other side for Tested Exterior Wall Assemblies.

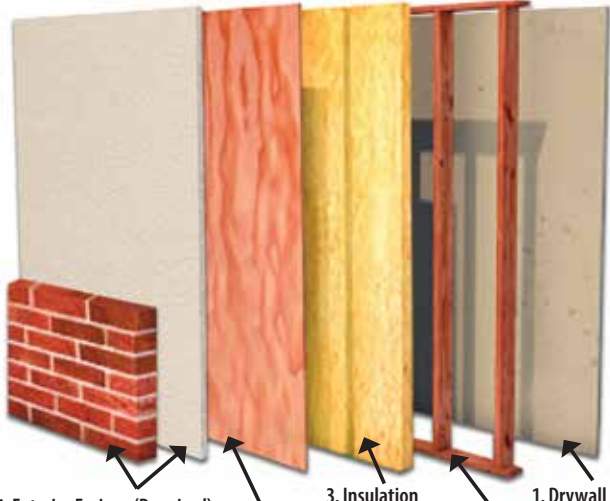
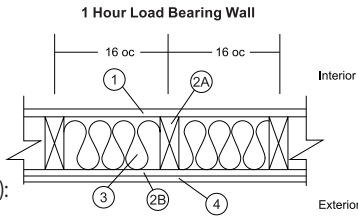
1 & 2 HOUR TESTED EXTERIOR WALL ASSEMBLIES (ASTM-E119, ANSI/UL 263)

1 Hour Tested Exterior Wall Assembly (60-01)

Max. Tested Load: 100% of Design Load

Fire Ratings: 1 hour, load bearing rated from interior and exterior. For details refer to ESR Report 4244.

- 1. Drywall
- 2A. FlamePRO Lumber
- 2B. FlamePRO Plywood
- 3. Insulation
- 4. Exterior Facings (Required):
Brick Veneer, 3/4" Cement Plaster (Stucco)



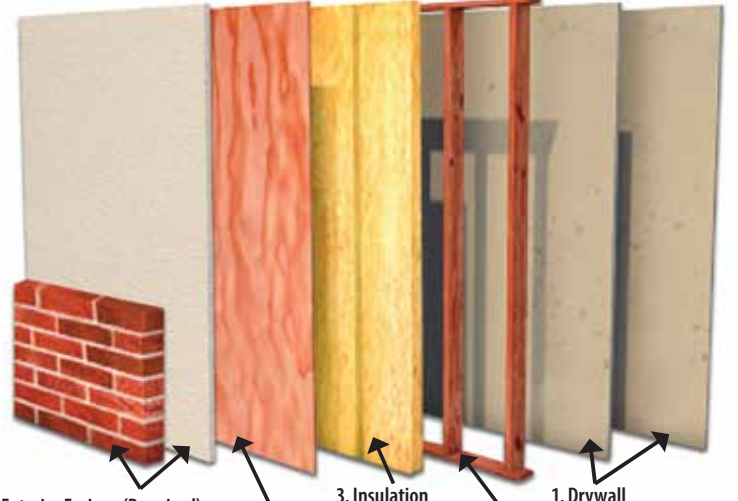
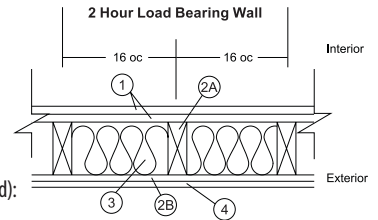
- 4. Exterior Facings (Required):
Brick Veneer, 3/4" Cement Plaster (Stucco)
- 3. Insulation
(Min. 3-1/2" thick, R-13 fiberglass batt; 2x6 studs 16" oc batt insulation requirements are R19)
- 1. Drywall
(Min. 5/8" thick, 4' wide, Type C; 1 hr from interior face)
- 2A. FlamePRO Fire Retardant Treated Lumber
(Min 2x4, 16" o.c. • Optional color indicator for identification)
- 2B. FlamePRO Fire Retardant Treated Plywood
(Min 15/32" thick • Optional color indicator for identification)

2 Hour Tested Exterior Wall Assembly (120-02)

Max. Tested Load: 100% of Design Load

Fire Ratings: 2 hour load bearing rated from interior and 1 hour load bearing exterior. For details refer to ESR Report 4244.

- 1. Drywall
- 2A. FlamePRO Lumber
- 2B. FlamePRO Plywood
- 3. Insulation
- 4. Exterior Facings (Required):
Brick Veneer, 3/4" Cement Plaster (Stucco)



- 4. Exterior Facings (Required):
Brick Veneer, 3/4" Cement Plaster (Stucco)
- 3. Insulation
(Min. 3-1/2" thick, R-13 fiberglass batt; 2x6 studs 16" oc batt insulation requirements are R19)
- 1. Drywall
(Min. 5/8" thick, 4' wide, Type C; 2 hr from interior face)
- 2A. FlamePRO Fire Retardant Treated Lumber
(Min 2x4, 16" o.c. • Optional color indicator for identification)
- 2B. FlamePRO Fire Retardant Treated Plywood
(Min 15/32" thick • Optional color indicator for identification)

IMPORTANT INFORMATION

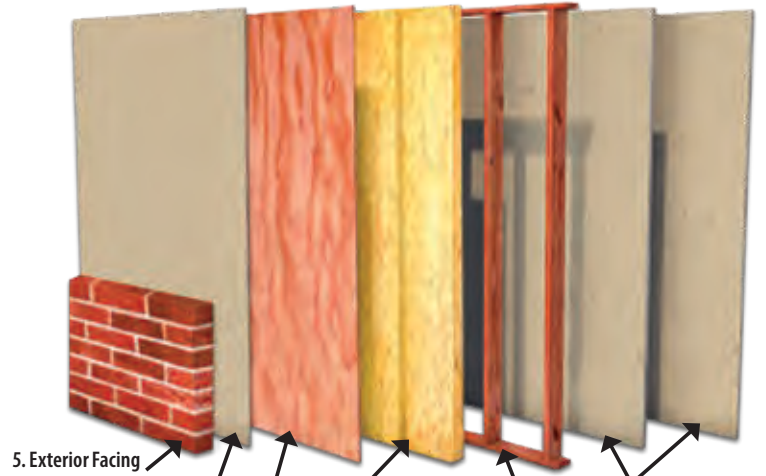
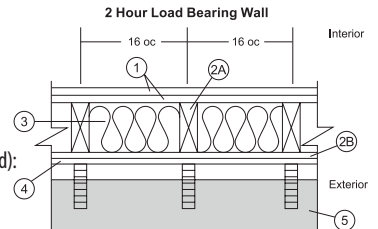
- Do not burn fire retardant treated wood. • Wear NIOSH N95 dust mask and goggles when cutting or sanding wood. • Wear gloves when working with wood. • Some fire retardant treated wood chemicals may migrate from the treated wood into soil/water or may dislodge from the treated wood surface upon contact with skin. Wash exposed skin areas thoroughly. • All sawdust and construction debris should be cleaned up and disposed of after construction.
- Wash work clothes separately from other household clothing before reuse. • Fire retardant treated wood should not be used where it may come into direct or indirect contact with drinking water. • Do not use fire retardant treated wood under circumstances where it may become a component of food, animal feed, or beehives. • Do not use fire retardant treated wood as mulch. • Only fire retardant treated wood that is visibly clean and free of surface residue should be used. • If the wood is to be used in an interior application and becomes wet during construction, it should be allowed to dry before being covered or enclosed. • Disposal Recommendations - Fire retardant treated wood may be disposed of in landfills or burned in commercial or industrial incinerators or boilers in accordance with federal, state, and local regulations. • If you desire to apply a paint, stain, clear water repellent, or other finish to your fire retardant treated wood, we recommend following the manufacturer's instructions and label of the finishing product. Before you start, we recommend you apply the finishing product to a small exposed test area before completing the entire project to insure it provides the intended result before proceeding. • Projects should be designed and installed in accordance with federal, state, and local building codes and ordinances governing construction in your area and in accordance with the National Design Specifications (NDS) and the Wood Handbook. • Mold growth can and does occur on the surface of many products, including untreated and fire retardant treated wood, during prolonged surface exposure to excessive moisture conditions. To remove mold from the treated wood surface, wood should be allowed to dry. Typically, mild soap and water can be used to remove remaining surface mold. For more information visit www.epa.gov. • Use fire retardant treated wood safely. Always read the label and product information before use.

2 Hour Tested Exterior Wall Assembly (120-03)

Max. Tested Load: 100% of Design Load

Fire Ratings: 2 hour load bearing rated from interior and 1 hour load bearing exterior.

- 1. Drywall
- 2A. FlamePRO Lumber
- 2B. FlamePRO Plywood
- 3. Insulation
- 4. Drywall
- 5. Exterior Facings (Required):
Brick Veneer



- 5. Exterior Facing (Required):
Brick Veneer
- 4. Drywall
(Min. 5/8" thick, 4' wide, Type C; 2 hr from interior face)
- 3. Insulation
(Min. 3-1/2" thick, R-13 fiberglass batt; 2x6 studs 16" oc batt insulation requirements are R19)
- 1. Drywall
(Min. 5/8" thick, 4' wide, Type C; 2 hr from interior face)
- 2A. FlamePRO Fire Retardant Treated Lumber
(Min 2x4, 16" o.c. • Optional color indicator for identification)
- 2B. FlamePRO Fire Retardant Treated Plywood
(Min 15/32" thick • Optional color indicator for identification)



For more information, call 1-800-585-5161 or visit www.kopperspc.com